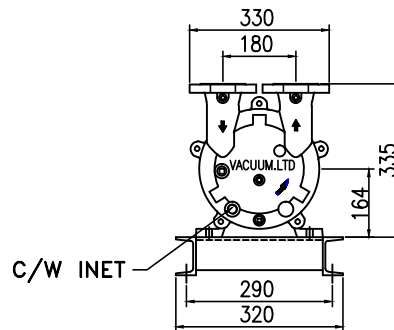
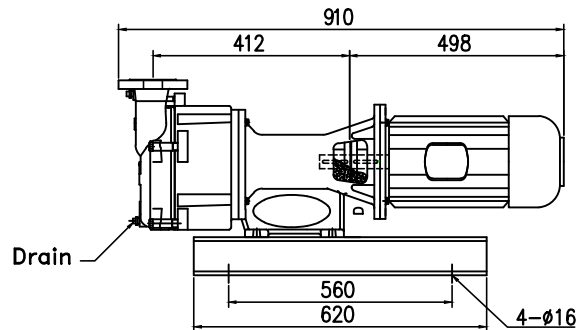
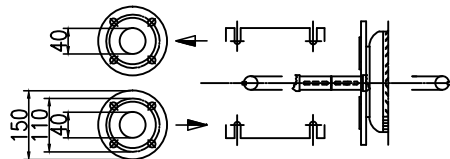


## SPECIFICATIONS

Design	2650 Lit./min(50Hz)
Displacement	3300 Lit./min(60Hz)
Speed	1400 r.p.m. (50Hz)
	1750 r.p.m. (60Hz)
Normal usage vacuum pressure	Under Torr
Attainable vacuum pressure	Max 22.5Torr
Suction port diameter	DIN 40A (2) (Option:B.S.P.T)
Motor	Vertical Motor Standard 3-Phase 220/380V 60Hz 7.5kW 4P
Water Capacity	15 C기준 18L/MIN
Weight	140 Kg
Painting	Color- VL951 (Company's standard)
Allowable ambient temp.	-10 - 40℃

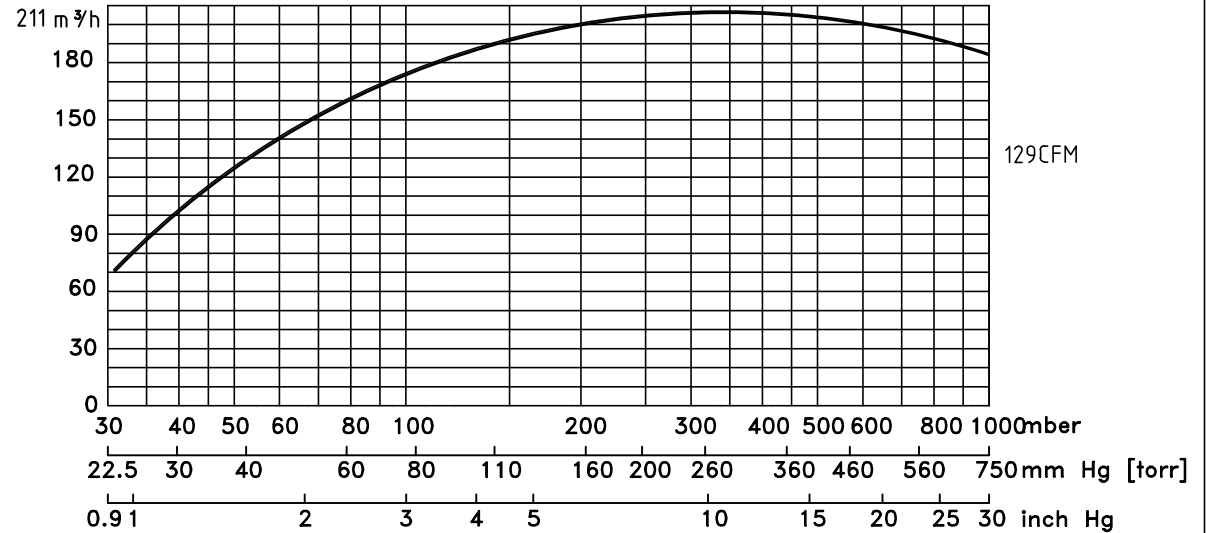
-1 Excluding motor and some other parts.  
-IEC FANGE MOTOR 부착기준



Curve referred to dry air at 20°C (68°F)

배기량 SUCTION CAPACITY

냉각수 온도 15 C 기준



### ACCESSORIES(Option)

- Vacuum Manual Valve
- Vacuum gauge
- Vacuum Check Valve
- Separator Tank

### CONSUMABLE LIST

(Vacuum.ENG GENUINE PARTS)

Designation	Specification	Quantity/set
M/C Seal	ø 45	1
Bearing	F#6307 R#6206 ZZ Heat - resisting grease	각 1
Half Coupling	ø100	1
Shaft Key	ø28 8x4	1

DWG DATE	SCALE	N/S	APPROVE	TITLE	WATER RING V/P
2020.00.00				CLIENT	
DWGBY	DESNBY	CHDBY	APPROVE	LOCATION	
				DWG NO	JDRP-9S(S)

- 품질 개선을 위해서 예고없이 변경 될수 있음.
- Not binding dimension that can change according to motor make.

진공엔지니어링